

PART OF THE N.E. 1/4, OF SEC. 24, T.6N., R.2W., S.L.B. & M.  
TOWNHOUSE ESTATES PHASE 1-A P.U.D.

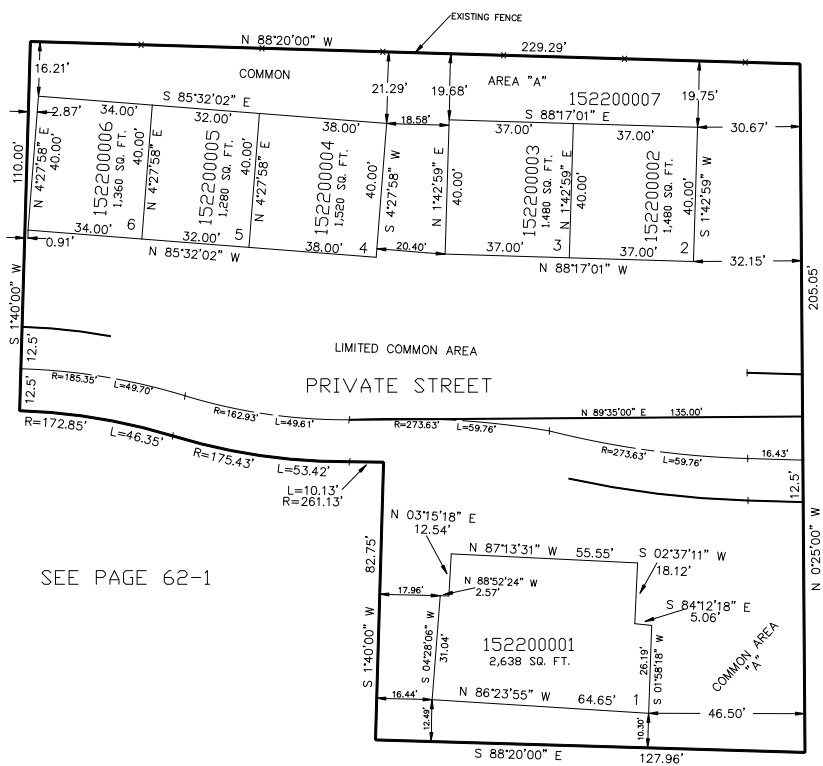
IN WEBER COUNTY

TAXING UNIT: 17

SCALE 1" = 30'

SEE PAGE 62-1

SEE PAGE 62-1



SEE PAGE 62-1

SEE PAGE 62-1

1200 WEST STREET

FOR COMPLETE ENG DATA SEE  
ORIGINAL DEDICATION PLAT IN  
BOOK 45 PAGE 21 OF RECORDS.

SEE PAGE 169